

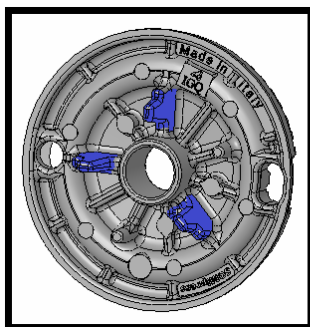


INFORMATION CIRCULAR HOB BURNERS – CORRECT ASSEMBLY

Thetford appliances utilise high efficiency type hob burners which will provide many years service. After cleaning burner parts it is important to correctly reassemble otherwise the performance will be degraded. Incorrect reassembly is equivalent to operating in an abuse situation and may lead to damage. The following details correct assembly method.

1. Locate the three legs on the burner crown into the three grooves of the burner cup (parts coloured blue below)

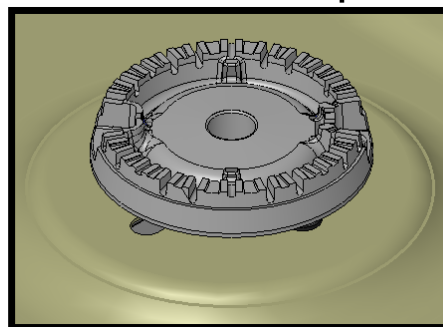
Burner Crown



Burner Cup

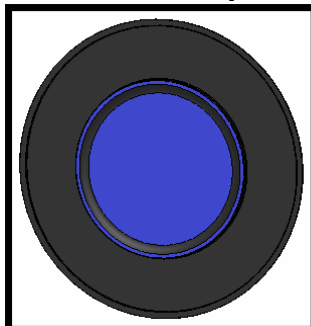


Correct assembled parts

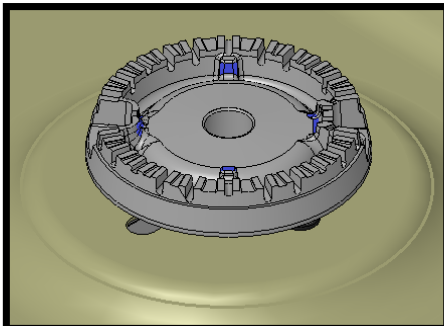


2. Locate spigot on underside of the burner cap, centrally between the four standoff's in the top of the burner crown (parts coloured blue below). After assembly check visually the cap is seated central and level on the burner crown.

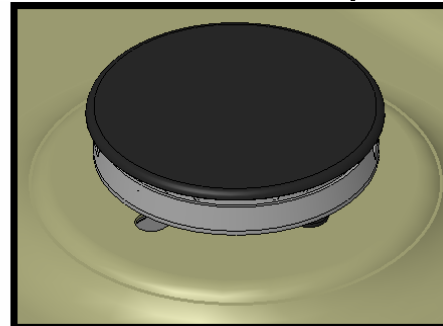
Burner Cap



Burner Crown



Correct assembled parts



To check the assembly:-

Light the burner and adjust to full rate. The flames should burn quietly and be well defined on each of the burner ports as shown opposite.



Poor location of burner cap – shown opposite will result in poor defined flames and/or noise from the burner. In either situation turn off and rectify.

