

## Work instruction

### Description: Change door direction

<b>Version:</b>	V1
<b>Date:</b>	6/04/2006
<b>Tools required:</b>	Screwdriver

**A**

Left handed door



**B**

Remove the black plastic cover on top of the fridge.

Remove the screw on the hinge plate.



**C**

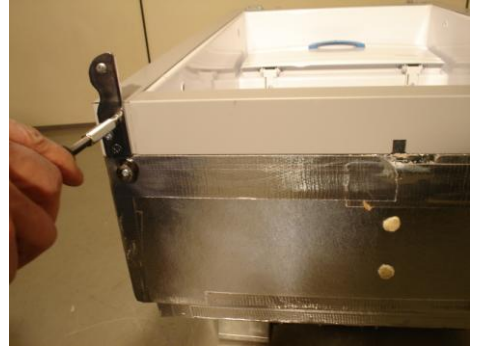
Lift up the hinge plate from on top of the fridge door.

Remove the door



D

Gently put the fridge  
on its side



Remove the bottom  
hinge plate

E

Remove the two  
screws from either  
side of the latch and  
remove the hinge  
hole plug



F

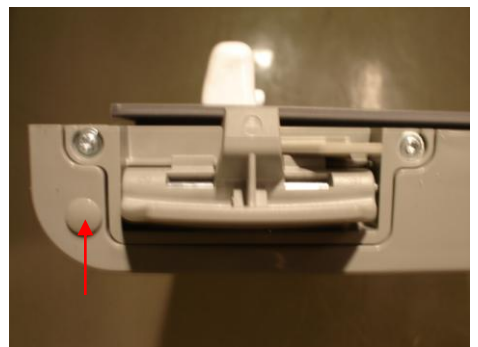
Remove the blank  
from the other side  
of the door.



Fix the blank on the  
other side of the  
door.

G

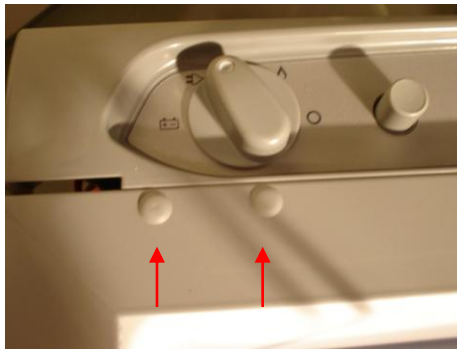
Fix the latch where  
the blank was  
previously.



Fix the hinge hole  
plug

H

Remove the two caps on the front of the fridge



I

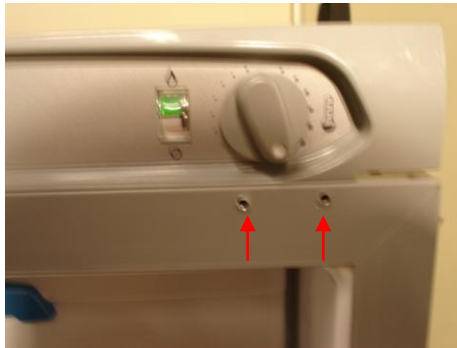
Remove the screws from the strike plate



Fix the strike plate on the other side of the cabinet

J

Place the two caps in the empty holes



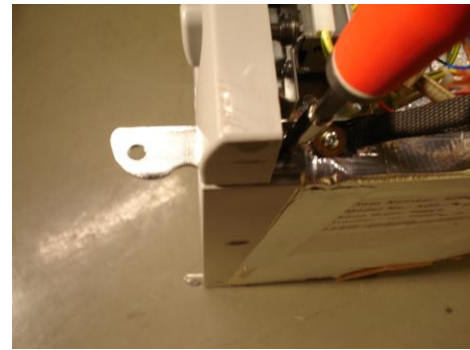
K

**NOTE**  
Inter change the two hinge plates



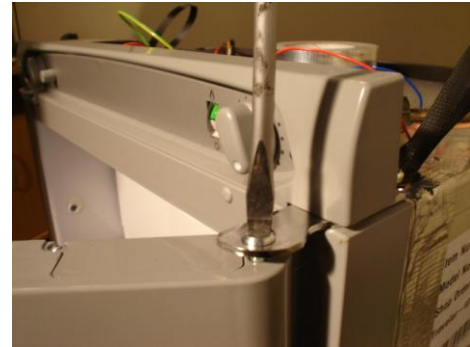
L

Mount the hinge plates on the opposite side using the pre-drilled holes (do the bottom latch first).



M

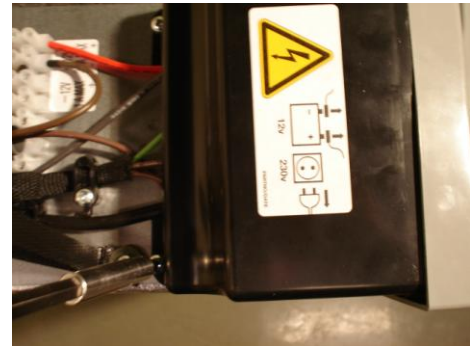
Place the door on the bottom latch pin



Fix the screw in the door

N

Refit the black plastic cover ensuring no wires are trapped.



O

New situation right handed door

