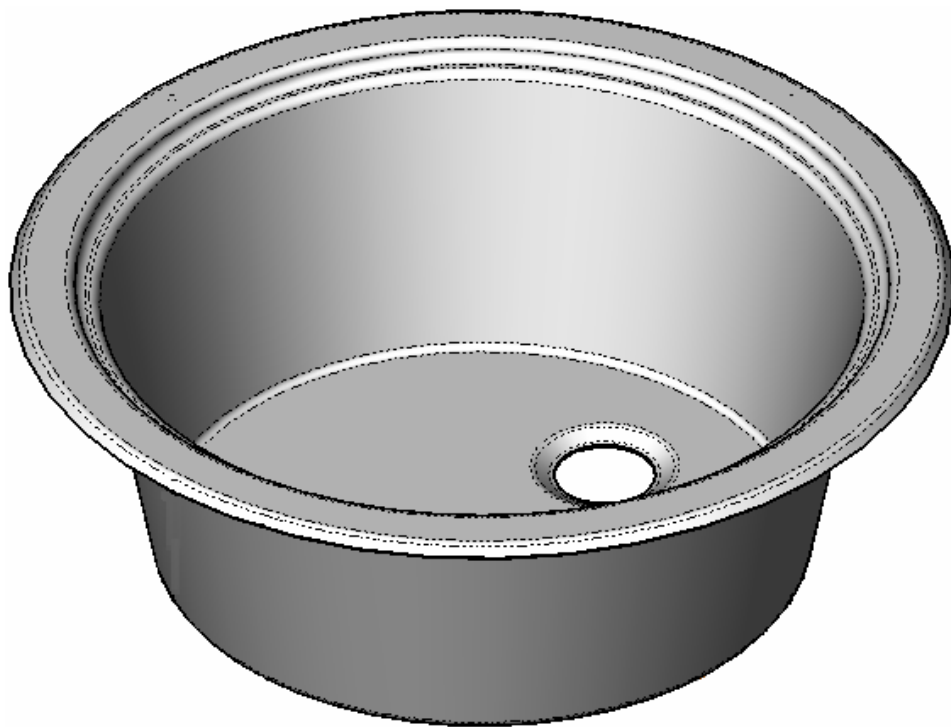




**BUILD IN APPLIANCES**  
**Spun Round Bowl**  
**Series 2200 & 2300**



**INSTALLATION INSTRUCTIONS**

**THETFORD LIMITED,  
19 OAKHAM DRIVE,  
PARKWOOD IND. EST.  
SHEFFIELD S3 9QX, ENGLAND.  
TEL: + 44 (0) 114 273 8157    FAX: + 44 (0) 114 275 3094**

## SPECIFICATION

### **Series 22xx**

Model code:-	S~BL22xx
Description:-	Flush fitting round bowl
Size -	Ø362mm, available in two depths – 122mm or 98mm
Fixing method:-	System 1, hidden worktop fixing

### **Series 23xx**

Model code:-	S~BL23xx
Description:-	Flush fitting round bowl
Size:-	Ø461mm x 125mm deep
Fixing method:-	Systems 1 & 2, hidden worktop fixing System 3 worktop 'top fix'

## INSTALLATION INSTRUCTIONS

Decide on the location of the bowl taking into account the fixing method, services required and the direction of the brush pattern on the bowl. Prepare the worktop as follows:-

### System 1 fixing:-

The bowl is supplied with 4mm fixing screws attached and equally spaced around the rim of the bowl. A foam seal, which prevents water penetration, is already attached. After preparing the worktop as shown in Fig. 1 position the bowl into the worktop and locate a washer and self locking nut onto each screw as shown in Fig. 2. Using a 7mm spanner carefully tighten each nut to clamp the bowl to the worktop.

### System 2 fixing:-

The bowl is supplied with under bowl fixings equally spaced around the base of the bowl as shown in Fig.3. A foam seal, which prevents water penetration, is already attached to the rim. Prepare the worktop as shown in Fig. 1 but note the 4 off Ø6mm holes are not required. Position the bowl in the worktop, locate a clamping bracket and washer onto each screw and retain in position with a lock nut. Check each bracket is located correctly against the worktop and carefully tighten each nut to clamp the bowl to the worktop.

### System 3 fixing:-

Equally spaced around the rim of the bowl are 4 fixing holes. A foam seal, which prevents water penetration is already attached. Prepare the worktop as shown in Fig. 1 but note the 4 off Ø6mm holes are not required. Position the bowl into the worktop and fix in position using the screws provided as shown in Fig.4.



### IMPORTANT

- Using too much force when tightening the nuts/screws may distort the rim of the bowl.
- We recommend the use of a torque tool to ensure all fixings are tightened equally – Max torque 100g/m.
- Only apply sufficient torque until the outer rim of the bowl touches the worktop surface. Over tightening may distort the rim of the bowl.

## APPLIANCE CARE INSTRUCTIONS

After use always remove any plastic bowl or mat, clean the surface with soap and hot water followed by a clean water rinse and drying with a soft cloth to prevent spotting. For more stubborn dirt or grease a non-abrasive multi-purpose cream cleaner may be used. To preserve the appearance of your appliance we recommend plastic bowls or mats are not stored in the sink.


The quality of water can affect your sink's appearance. If the water has high iron content, a brown surface stain can form on the sink giving the appearance of rust. Additionally, in areas with a high concentration of minerals, or with over-softened water, a white film may develop on the sink. To combat these problems, towel dry the sink after use, and clean at least once every week.

Surface scratching will be most noticeable on highly polished components, in particular on the rim of the bowl where hard objects could be placed. These marks are usually only superficial and can be removed with a proprietary stainless steel cleaner/polish.

If the surface has a directional polished grain always clean along the grain and NOT across. Never use wire wool pads to clean the surface.

Cleaning agents containing bleach should not be left in contact with stainless steel. This includes many of the new "trigger-dispense" products and some multi purpose cream cleaners. Also leaving rubber mats or dishpans in the sink can lead to surface rust or pitting, always remove them after use.

**Fig. 1.      WORKTOP CUTOUT**

	System 1 Fixings		System 2 Fixings	System 3 Fixings
	Series 22xx	Series 23xx	Series 23xx	Series 23xx
1	Ø315mm	Ø405mm	Ø405mm	Ø405mm
2	336mm	426mm	Not Required	Bowl fixed with 4 x Ø3.5mm x 25mm 
3	336mm	426mm	Not Required	
4	4 Holes @ Ø6mm		Not Required	

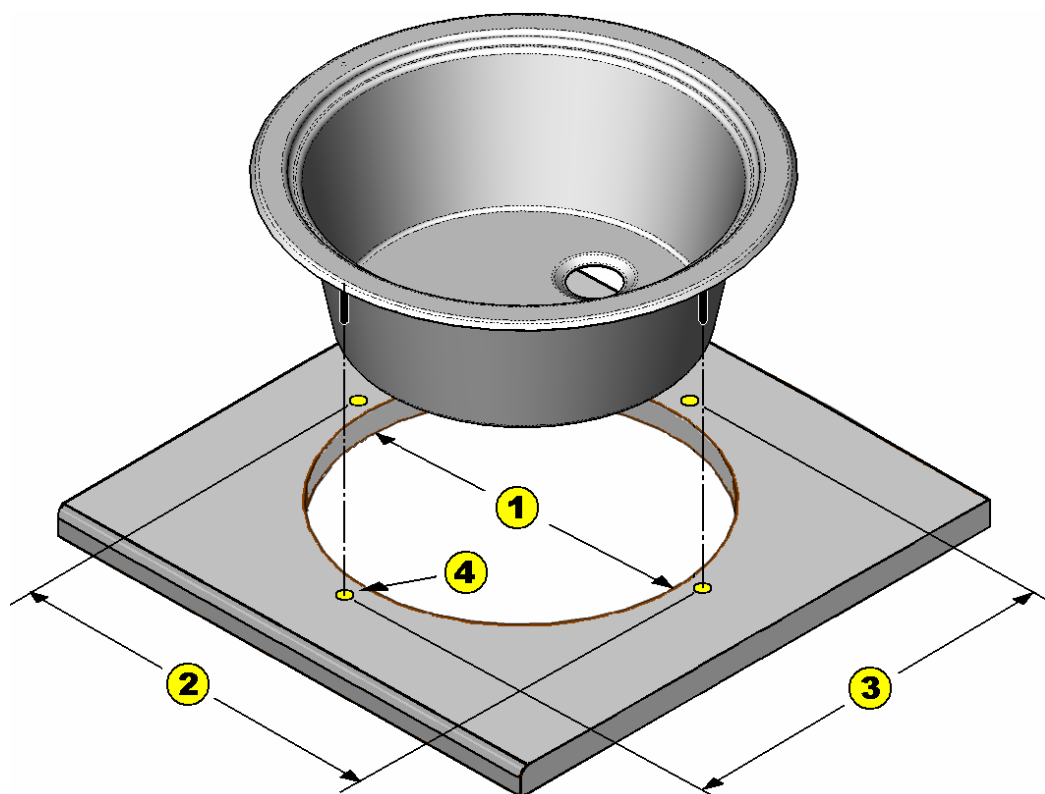
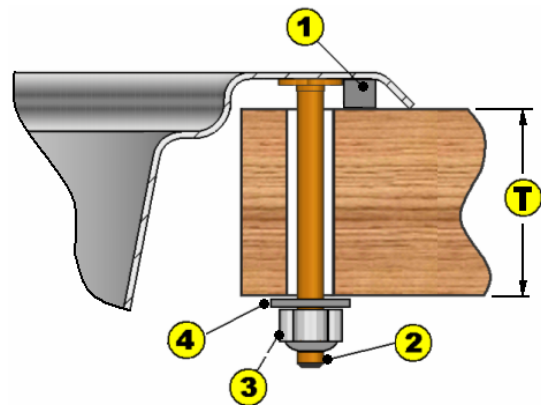
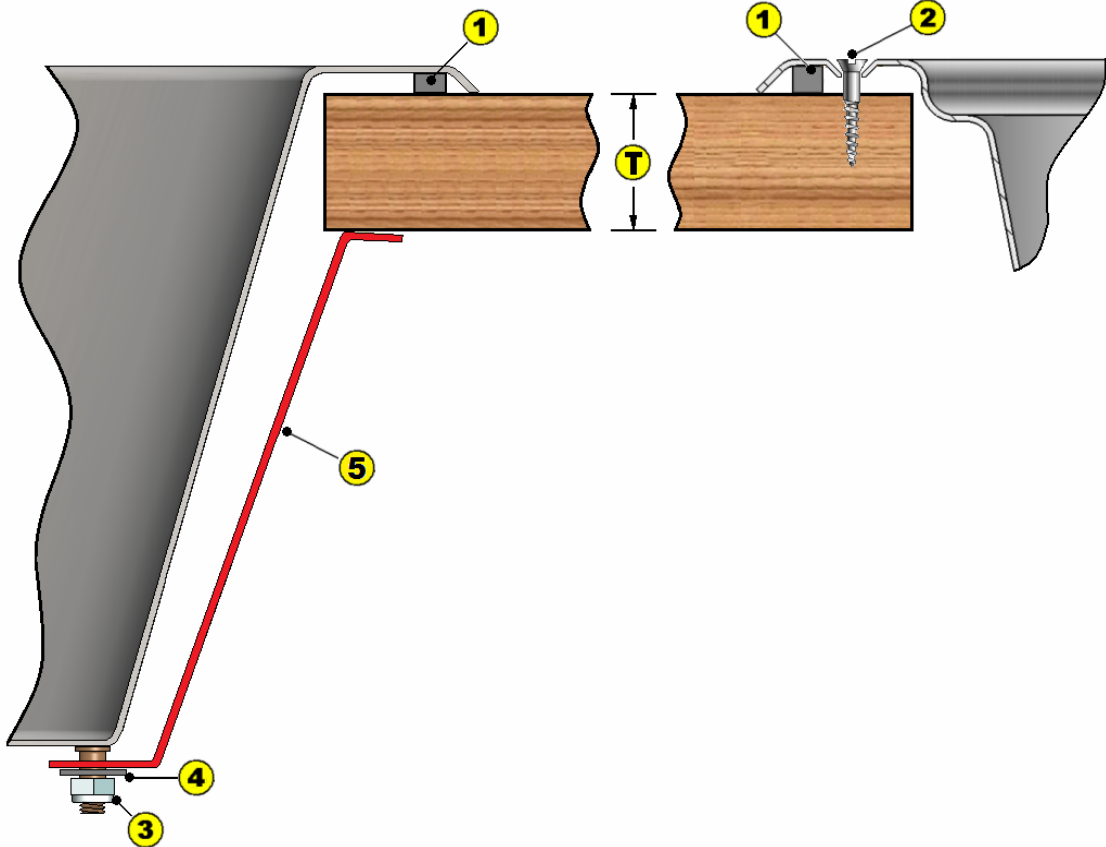


Fig. 2 System 1 fixing



1	SELF ADHESIVE FOAM SEAL	2	FIXING SCREW
3	SELF LOCKING NUT	4	STEEL WASHER
T	15mm (Min) 30mm (Max)		

Fig. 3 System 2 fixing



1	SELF ADHESIVE FOAM SEAL	2	FIXING SCREW
3	SELF LOCKING NUT	4	WASHER
5	CLAMPING BRACKET	T	15mm (Min) 30mm (Max)